

Power supply unit ATX 75W with single 12VDC power source

<http://www.inpc.com.ua>

DP031

Input connectors:

PWL-3 (3x3.96 mm, for header PHU-3) (in model **DP031-PWL**)

DJK-02A (for plug $\varnothing 5.5 \times 2.1 \times 11$) (in model **DP031-DJK**)

Input features:

Minimum input voltage: +12V

Maximum input voltage: +14V

Nominal input voltage: +12.6V

Maximum consumption current: 5A

Output connectors:

20-pin ATX (MF-20F) (power rails: +5Vsb, +5V, +3.3V, +12V, -12V, GND, PS-ON, PG)

4-pin for HDD ATA (TH-4F) (power rails: +5V, GND, +12V)

2-pin (BLS-2) from button to motherboard (for **DP031-DJK** only)

Output features:

Power rail	Nominal voltage, V	Nominal voltage tolerance range, %	Maximum current, A
+5Vsb	5	+5 / -3	6 ⁽¹⁾
+5V	5	+5 / -3	6 ⁽¹⁾
+3.3V	3.3	± 2	6
+12V	12 ⁽²⁾	± 3	2
-12V	12 ⁽³⁾	—	0.1 ⁽⁴⁾

(1) Maximum combined current on +5Vsb and +5V outputs

(2) Input voltage value should be not less than 12.6V

(3) PSU does not have a regulated +12V output, but simply passes the 12V of the input supply voltage. Maximum output voltage with no-load not exceed input value. Minimum output voltage value with current load 0.1A and input voltage 12V is not less than 10V.

(4) Output voltage value should be not less than -10V

Power supply unit ATX 75W with single 12VDC power source

<http://www.inpc.com.ua>

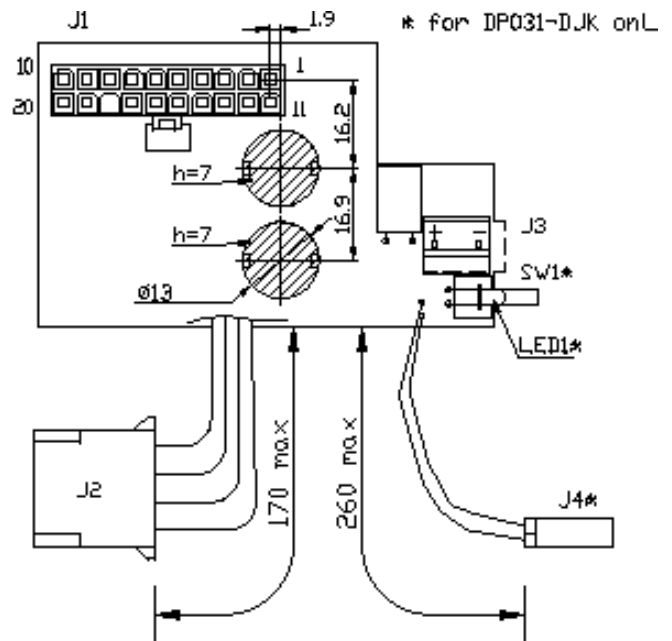
DP031

J1 ATX OUT MF-20F
(MOLEX 5557 39-01-2200)

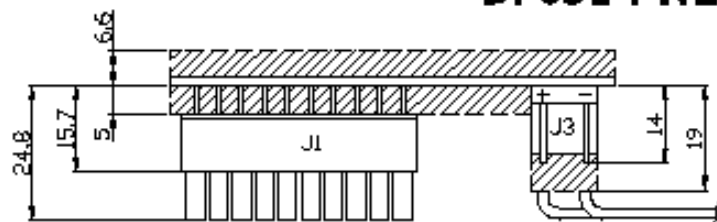
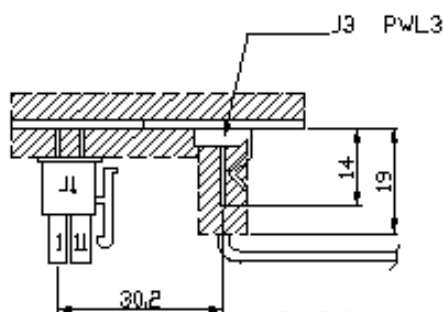
Pin	Description	Pin	Description
1	+3.3V	11	+3.3V
2	+3.3V	12	-12V
3	GND	13	GND
4	+5V	14	PS ON
5	GND	15	GND
6	+5V	16	GND
7	GND	17	GND
8	PWR GD	18	NC
9	+5V_SB	19	+5V
10	+12V	20	+5V

J2 HDD OUT TH-4F
(MOLEX 8981-04P)

Pin	Description	Wire Color
1	+12V	Yellow
2	GND	Black
3	GND	Black
4	+5V	Red

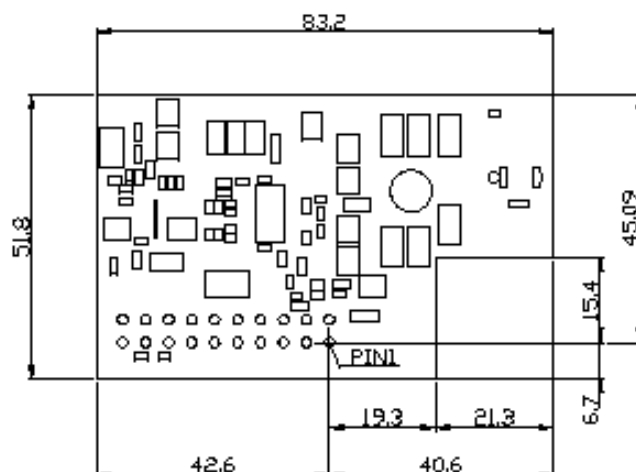
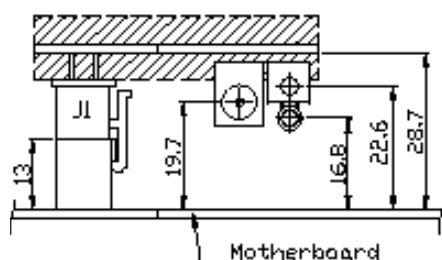
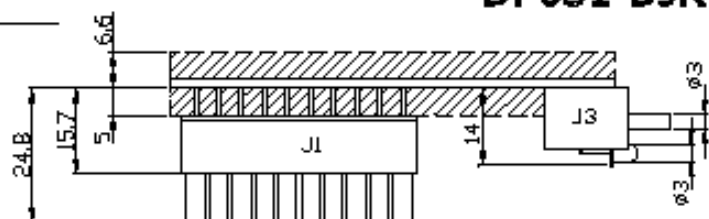
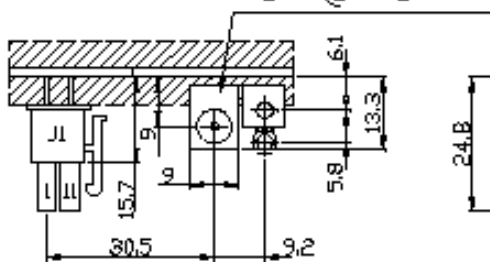


DP031-PWL



J3 DJK
for plug ø5.5*2.1*11

DP031-DJK



**Power supply unit ATX 75W
with single 12VDC power source**

<http://www.inpc.com.ua>

DP031

