

D4056 series

40X40X56mm (1.57"X1.57"X2.20")

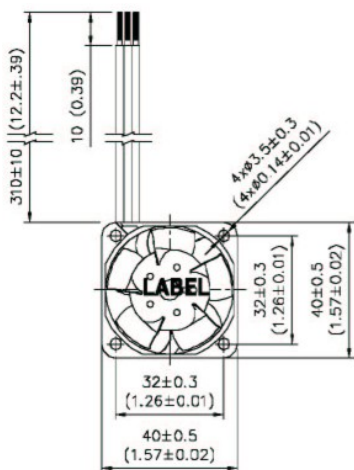


HOUSING	Thermoplastic PBT, UL94V-0
IMPELLER	Thermoplastic PBT, UL94V-0;5 Blades
BEARING	Ball
OPERATING TEMPERATURE	-10 °C to +70 °C
INSULATION RESISTANCE	10 meg Ohms Min. @500 VDC (Between Frame and Terminal)
DIELECTRIC STRENGTH	5 mA Max. at 500 VAC 60Hz for 1 minute (Between Frame and Terminal)
WEIGHT	96g(3.09OZ)
ROHS COMPLIANCE	Yes

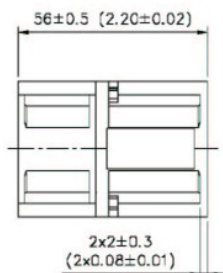
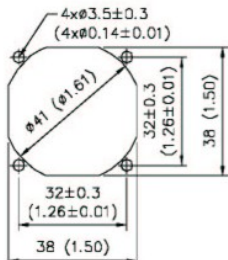
SPECIFICATION

MODEL NO.	RATED VOLTAGE (V)	RATED CURRENT (A)	INPUT POWER (W)	SPEED (RPM)	MAX. AIR PRESSURE		Maximum Air Flow		NOISE dB(A) @1M
					inchH ₂ O	mmH ₂ O	CFM	m ³ /min	
D4056V12S	12	1.25	15.00	13900	2.028	51.51	29.83	0.845	61.5
D4056V12H	12	1.00	12.00	13300	1.815	46.11	28.42	0.805	61.0
D4056V12M	12	0.85	10.20	11000	1.496	38.01	26.05	0.738	58.0

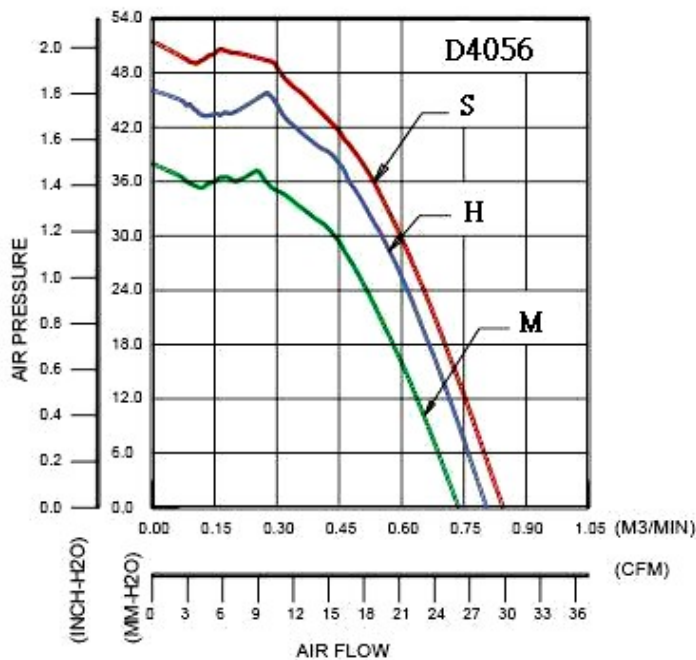
DIMENSION



MOUNTION PANEL CUTOUT
OUTLET SIDE & INLET SIDE



AIR PERFORMANCE



UNIT: mm(inch)

ACTIVA INC.

9F-1, 472, Chung San 2nd Road, Kaohsiung 800, Taiwan, R.O.C.
 TEL:886-7-2824356 FAX:886-7-2414287
 Website:www.activa.com.tw Email:symbang@seed.net.tw