

Product Facts

We make sure



DeskUpdate

Issue January 2005
Product DeskUpdate

Pages 3



Contents

Positioning and target groups	2
Positioning and target groups	2
Customer benefits	2
Product description	2
Technical data	2
System requirements	3
Additional information and contacts	3

Positioning and target groups

DeskUpdate is designed for all customers wanting to install a PC system or update the drivers of a system to the latest status.

Customer benefits

Automating the driver installation and driver update process makes life a great deal easier for the user. It means an end to searching for the right driver and ensures no driver gets forgotten. Only drivers tested and approved by Fujitsu Siemens Computers are loaded. Even the optimum sequence is taken into account and all the drivers are installed in one go, so only a single restart is necessary at the end of the operation. All this means a fast, risk-free and thorough update of your installation.



Product description

DeskUpdate is included on the OEM DUCD (Driver&Utility CD) and is also available on the Internet.

Link: <http://support.fujitsu-siemens.de/ducd>

Figure 1 OEM Driver&Utility CD

Technical data

Driver update

DeskUpdate offers two driver installation options: fully automatic and manual. With fully automatic installation, DeskUpdate checks which drivers of the system can be replaced by more recent versions and carries out this action following confirmation by the user. With manual installation, on the other hand, the user can choose from a list of the drivers to be updated. He can therefore decide which new drivers are to be installed and which not. However, the user does not need to decide which version of the particular driver is to be installed. In both cases DeskUpdate handles the installation and if necessary prompts the user to restart the system at the end of the installation process.

Hotfix installation

As well as the latest drivers, DeskUpdate also provides hotfixes to install for Windows operating systems. These can likewise be installed manually or fully automatically. Hotfixes usually come from Microsoft and fix minor bugs in Windows that were not remedied with the last Service Pack.

Driver overview

DeskUpdate also offers the option of viewing all currently installed drivers, including version and release date. This function offers the user very quick and convenient access to information that he needs, for example, to call the hotline.

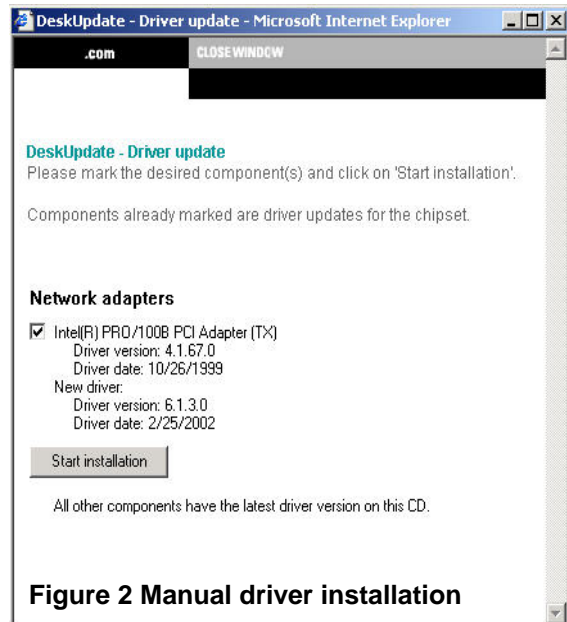


Figure 2 Manual driver installation

DeskUpdate Web version

The Web version of DeskUpdate is better suited to updating drivers on a system that has already been completely installed. For this, access to the Internet is required. Since the new drivers have to be downloaded first, a fast access connection (e.g. ISDN or DSL) is recommended. Unlike DeskUpdate on the DUCD, the Web version only offers the choice of manual installation of drivers and hotfixes. Before the drivers are analyzed, however, an ActiveX component has to be installed to enable access to the relevant information.

System requirements

Following are the minimum system requirements for using DeskUpdate:

- Microsoft Windows Me, Windows 2000, Windows XP
- Internet Explorer 5.01 or higher
- CD-ROM drive (for DUCD)
- Internet access (for Web version)

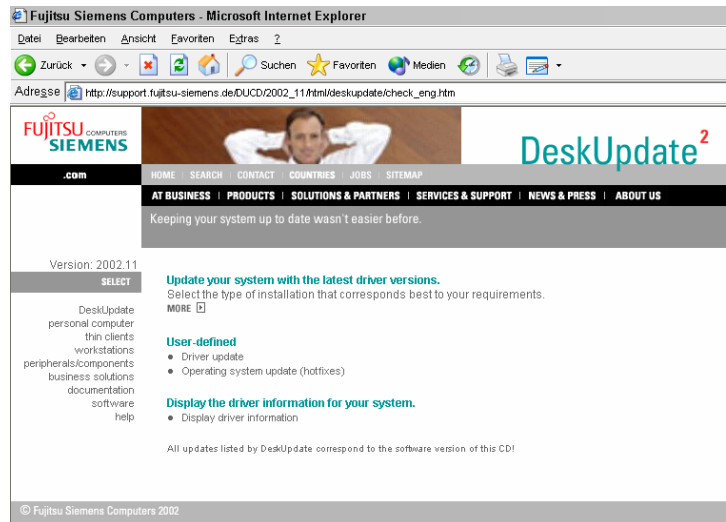


Figure 3 DeskUpdate Web version

Additional information and contacts

Information:

<http://www.fujitsu-siemens.com/mainboards>

Downloads (manuals, drivers, BIOS):

<http://download.fujitsu-siemens.com>